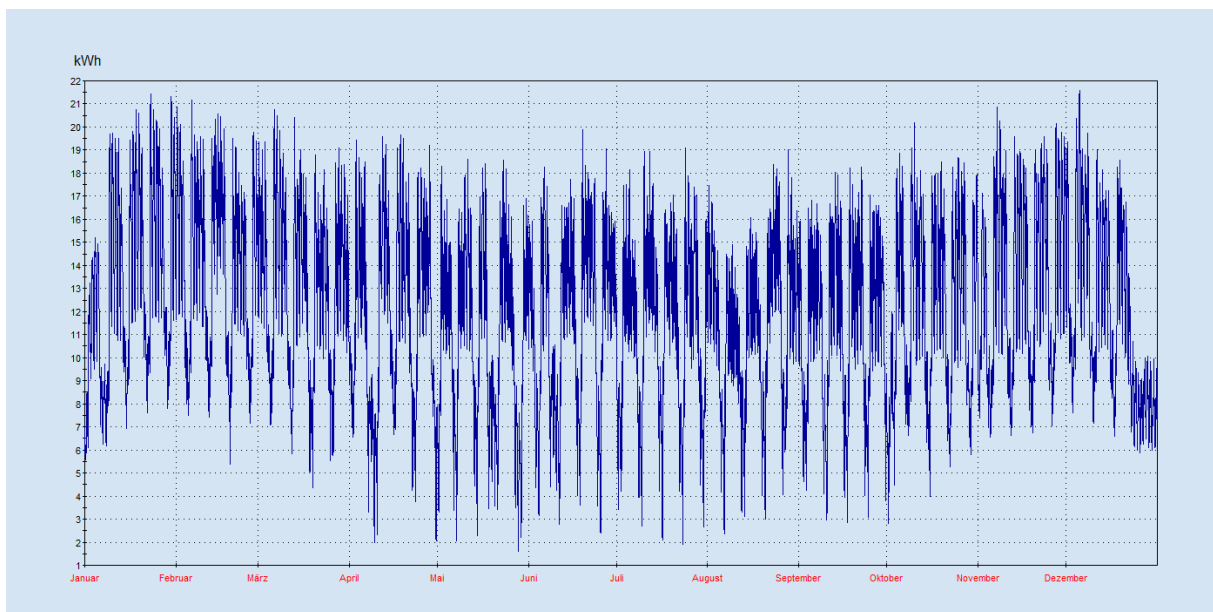
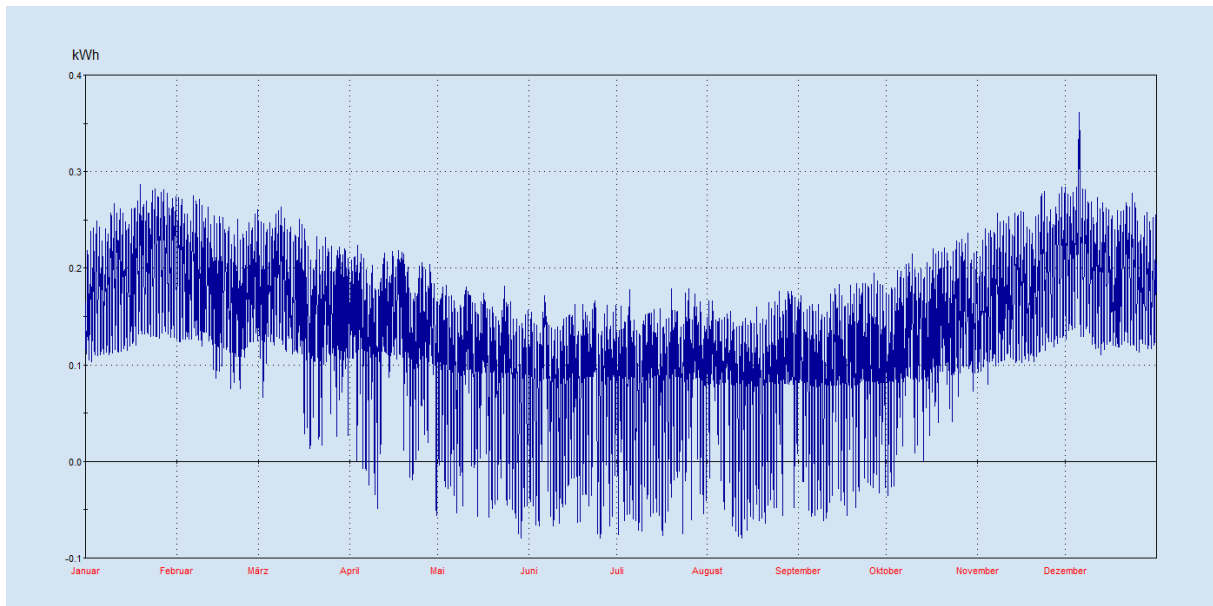


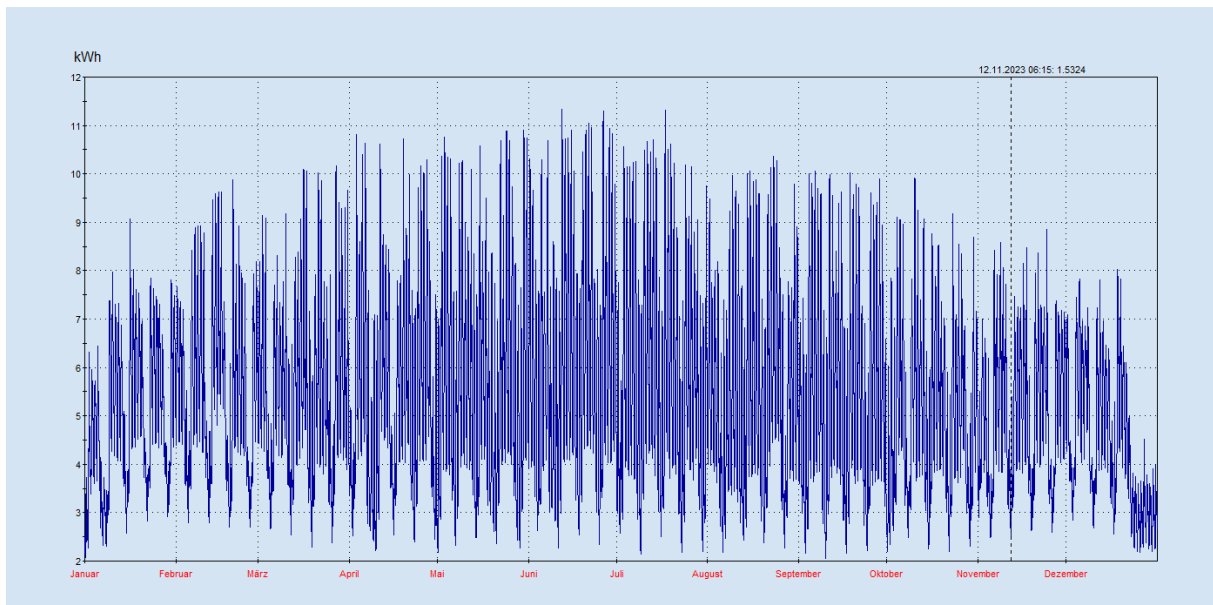
Jahreshöchstlast (EL in kWh)



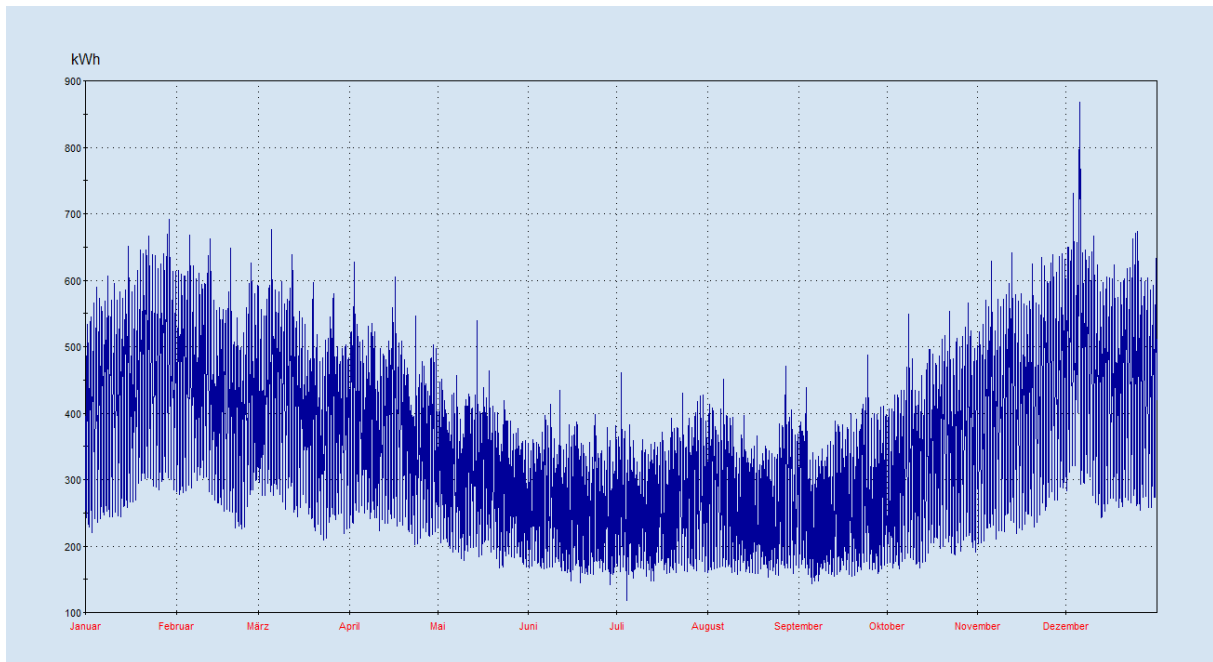
Verluste NE5



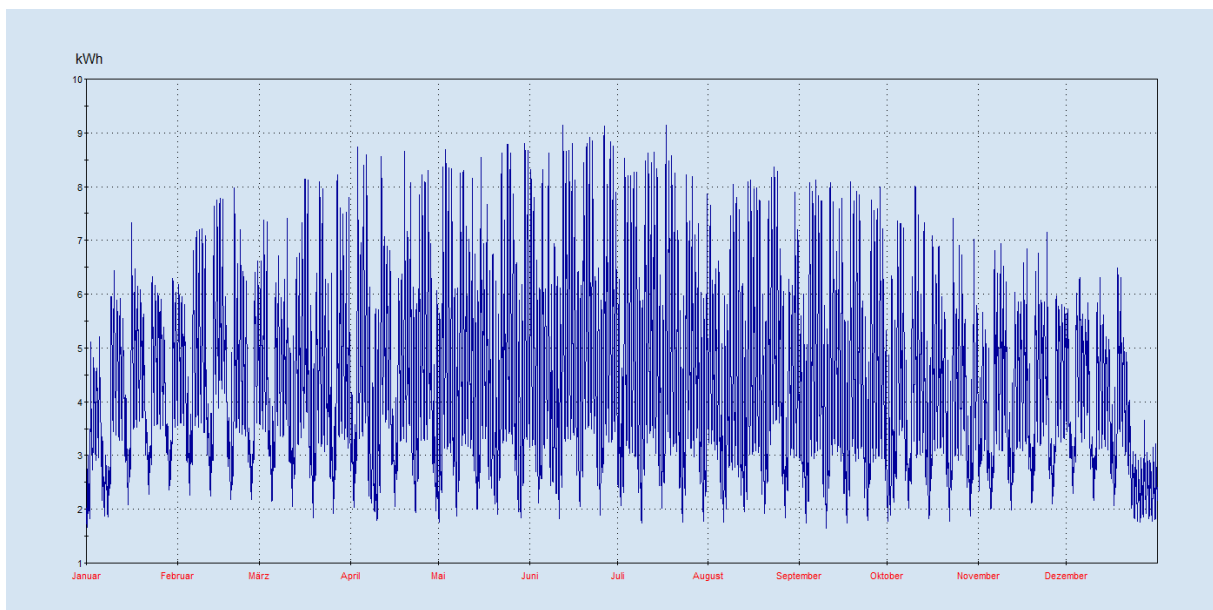
Verluste NE6



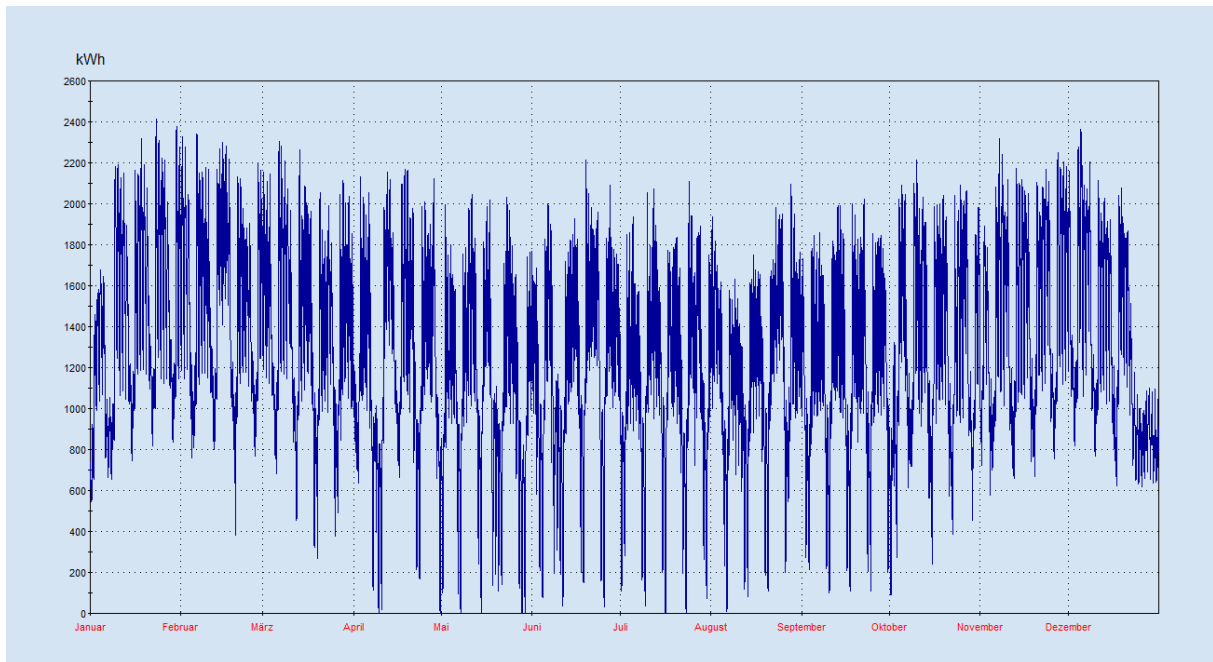
Verluste NE7



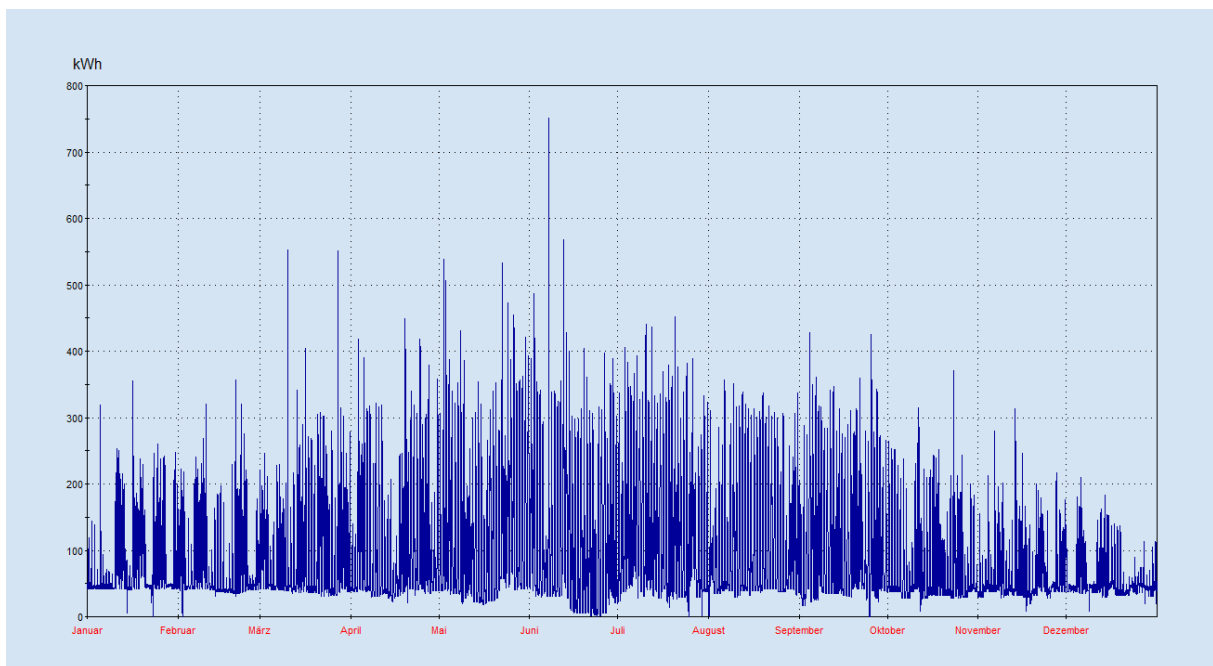
Nicht leistungsgemessener Letztverbrauch NE7



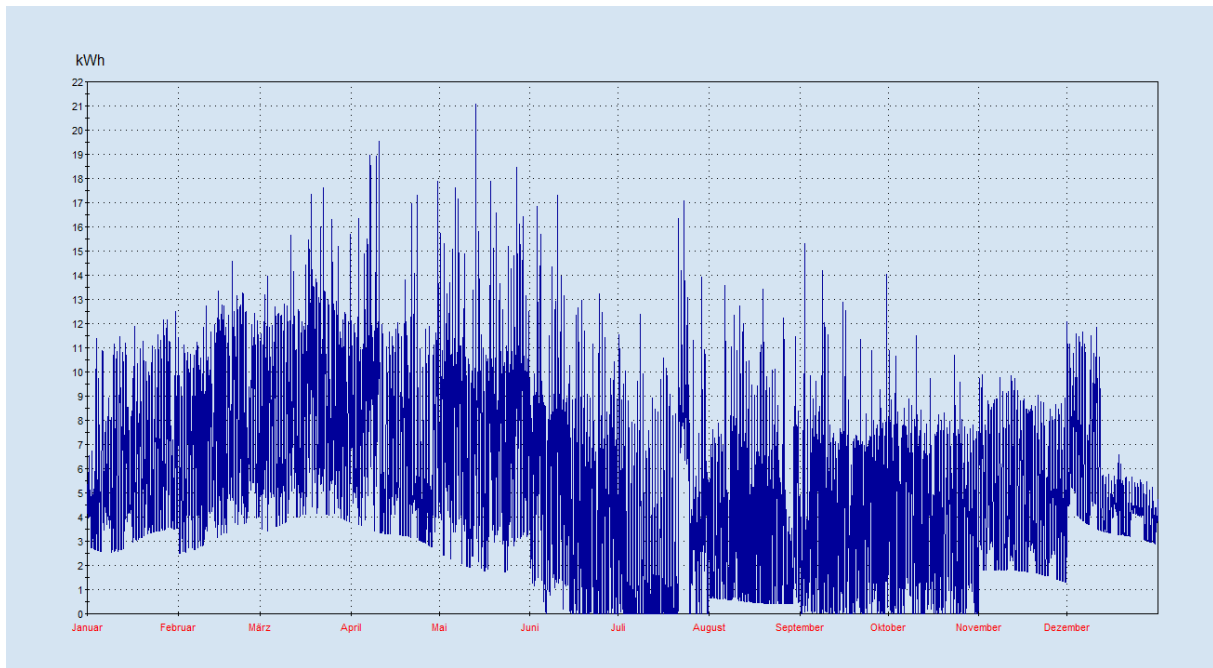
Verluste nicht gemessene Letztverbraucher



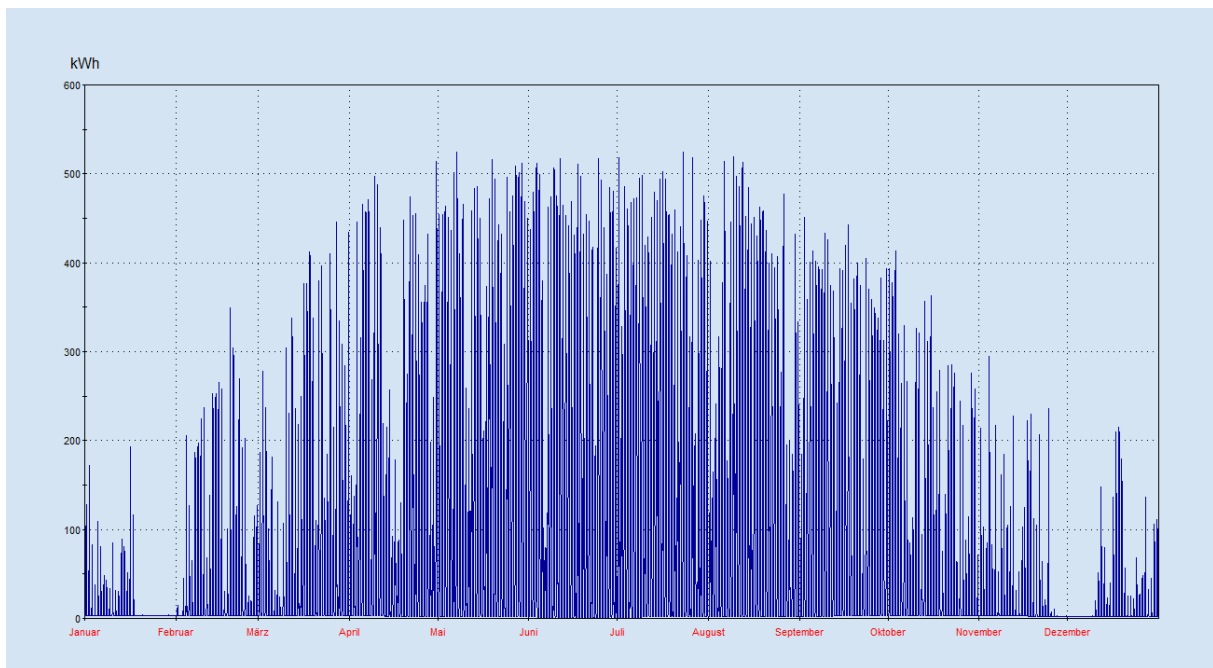
Summe Bezug vorgelagertes Netz NE5 aus NE4



Einspeisung NE5



Einspeisung NE6



Einspeisung NE7

Mengen Verluste:

NE5	0,89 %
NE6	0,04%
NE7	1,23 %