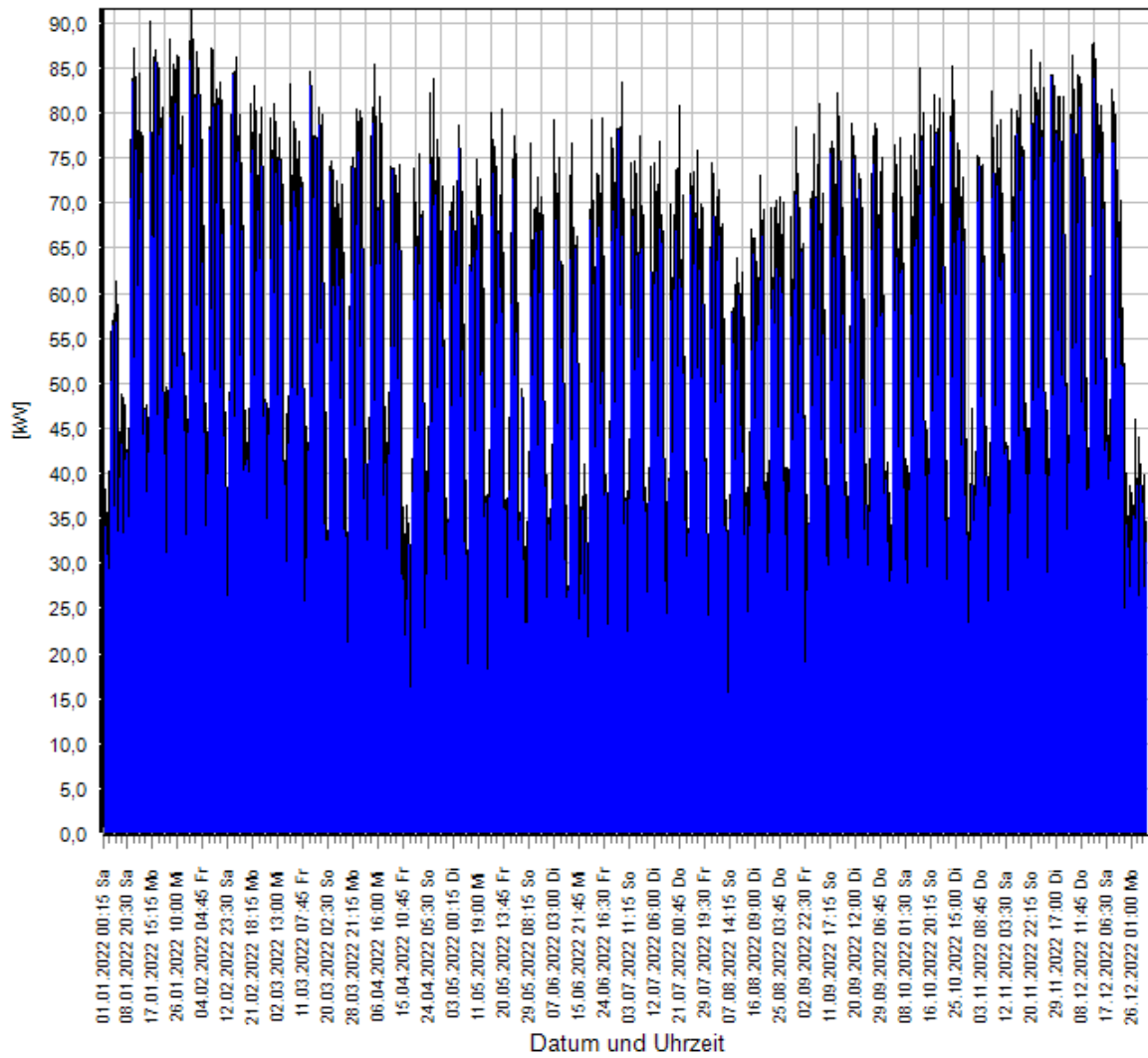
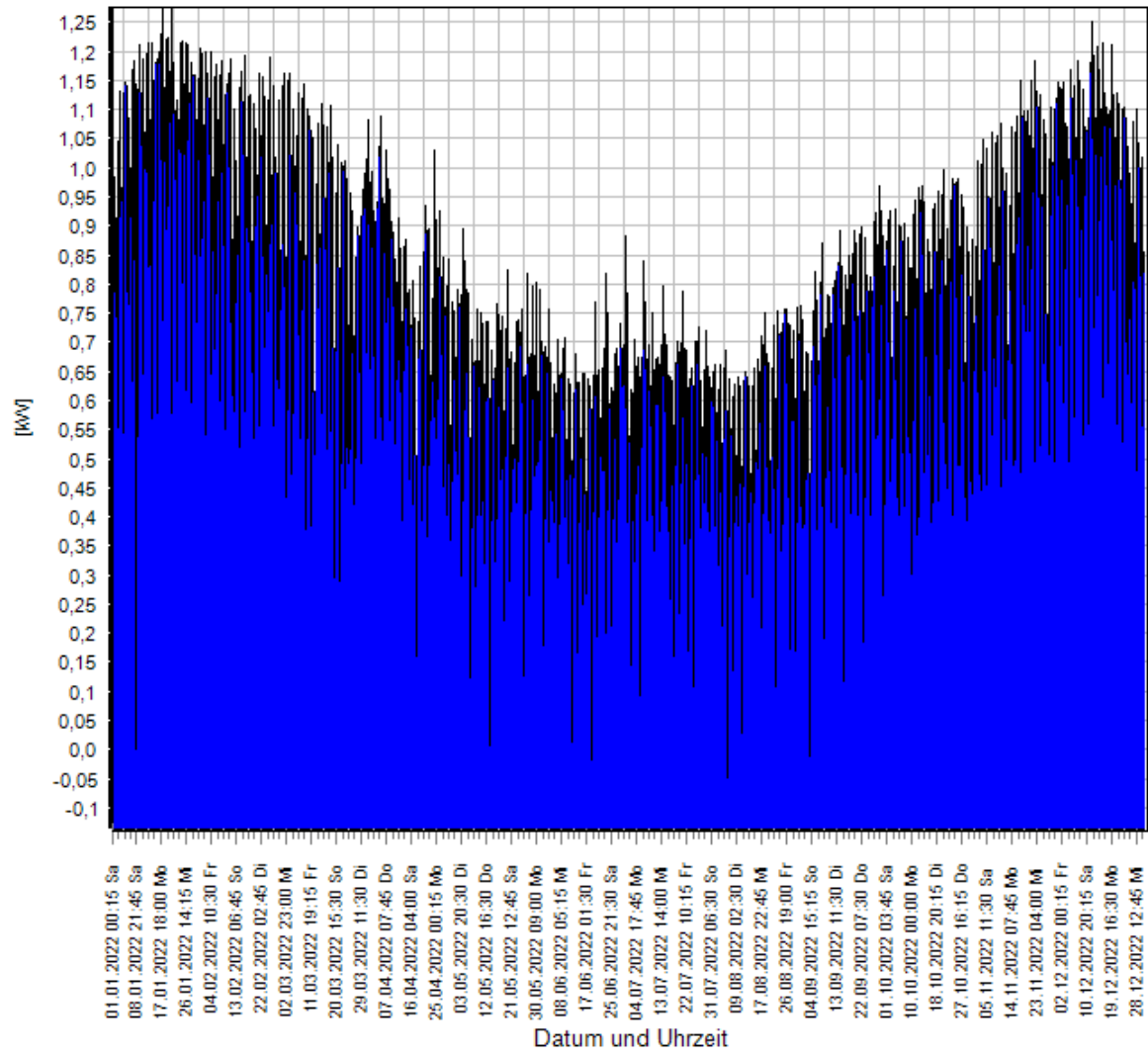


Datum und Uhrzeit

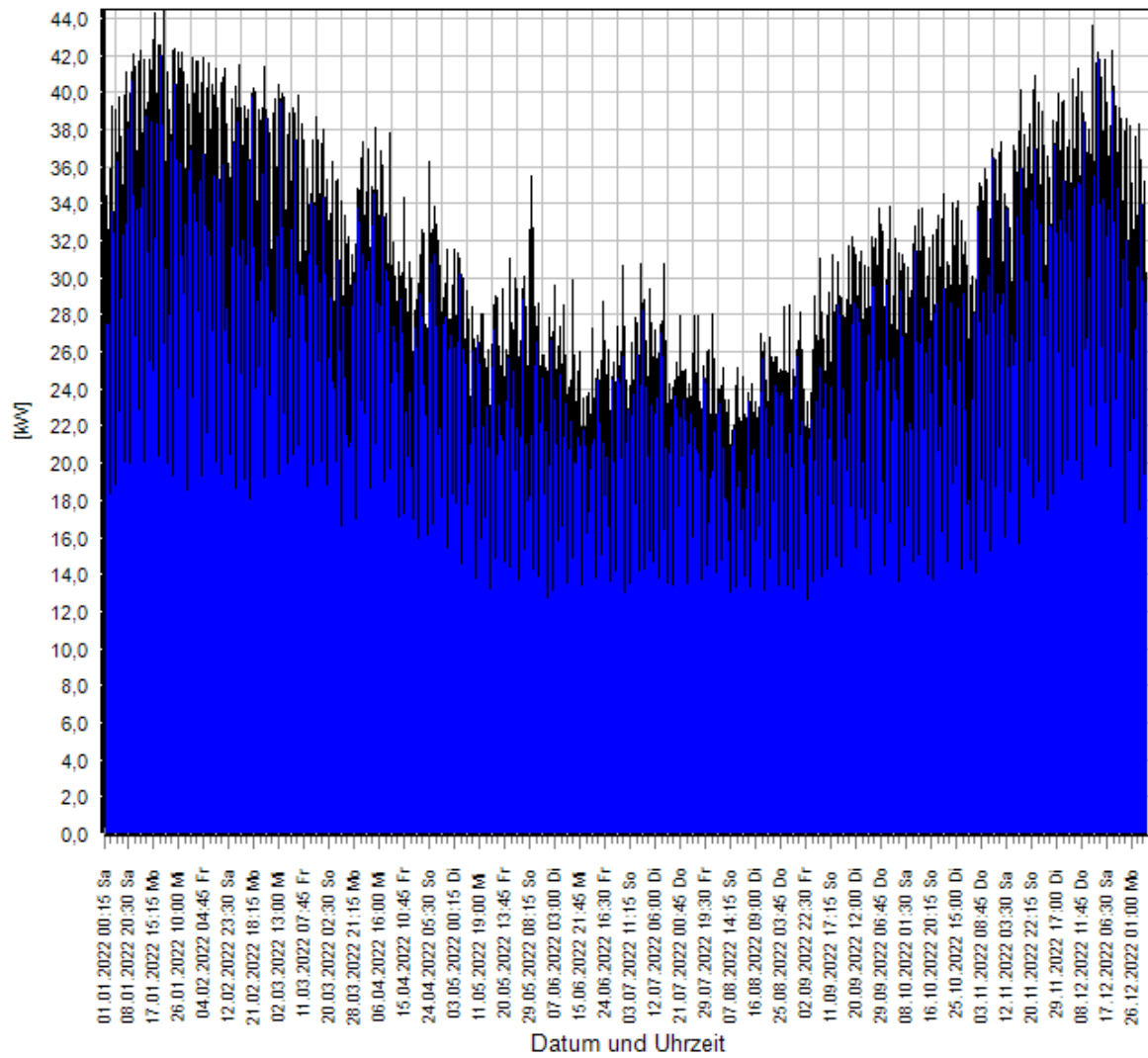
Jahreshöchstlast



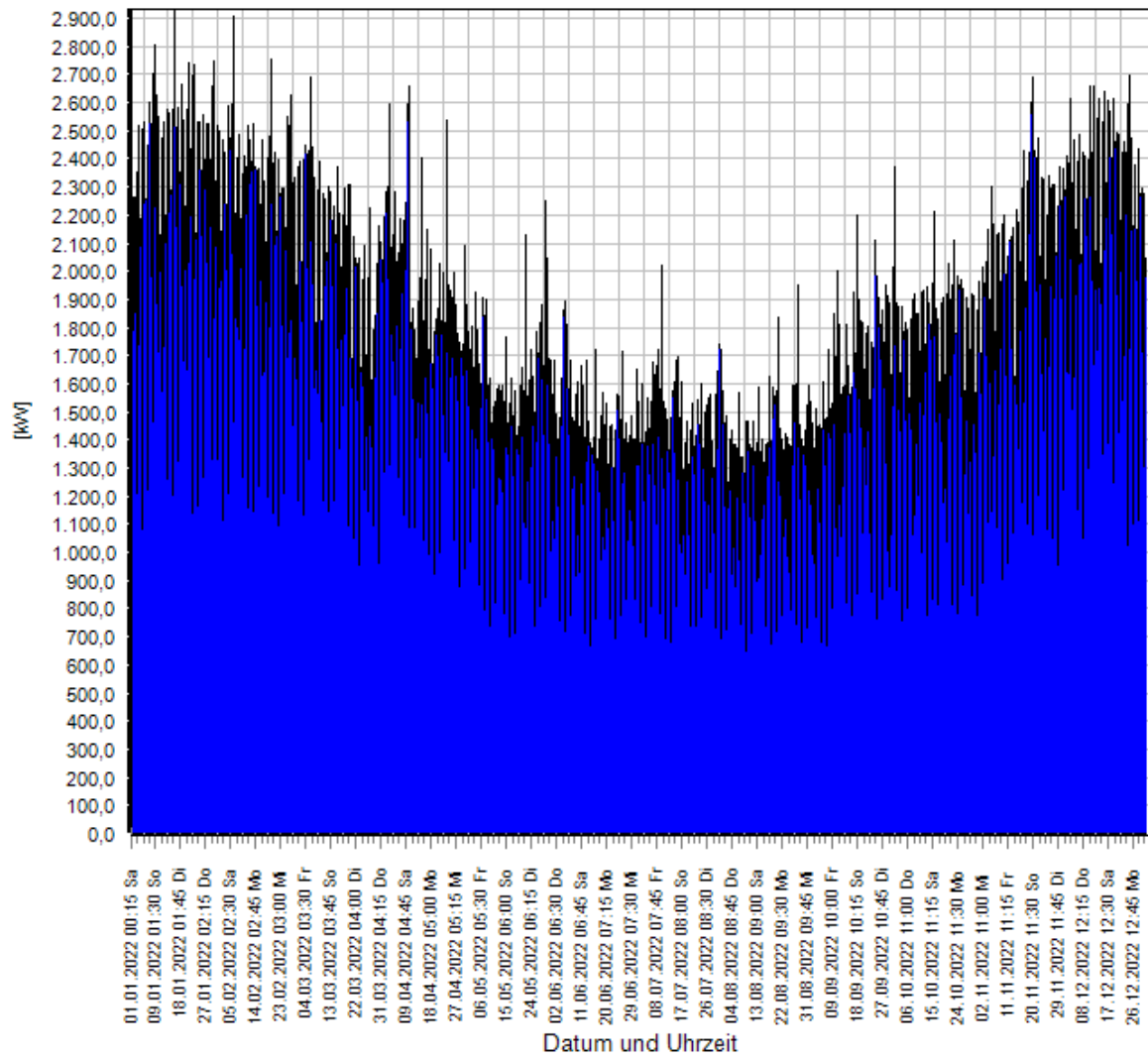
Verluste NE5



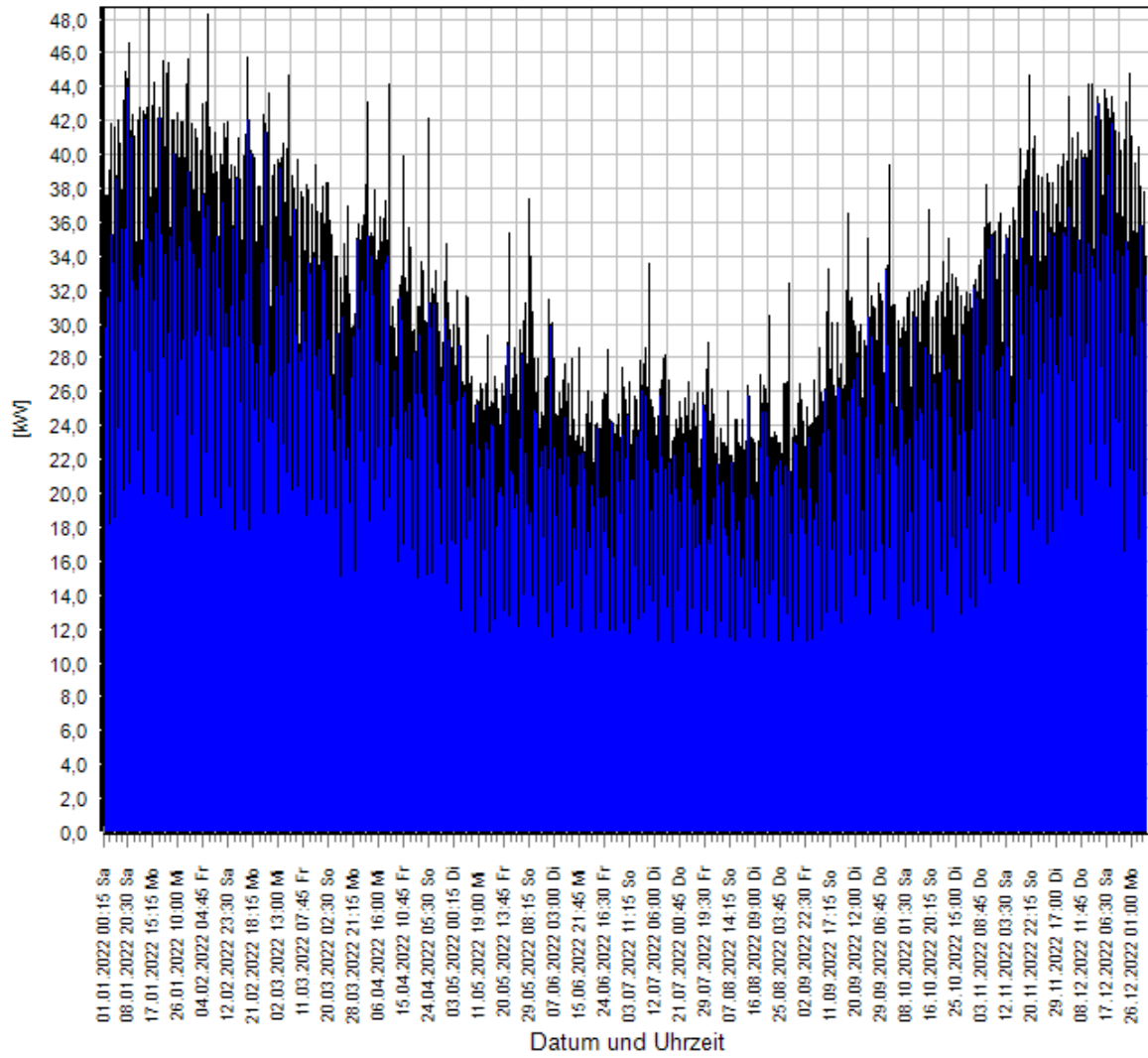
Verluste NE6



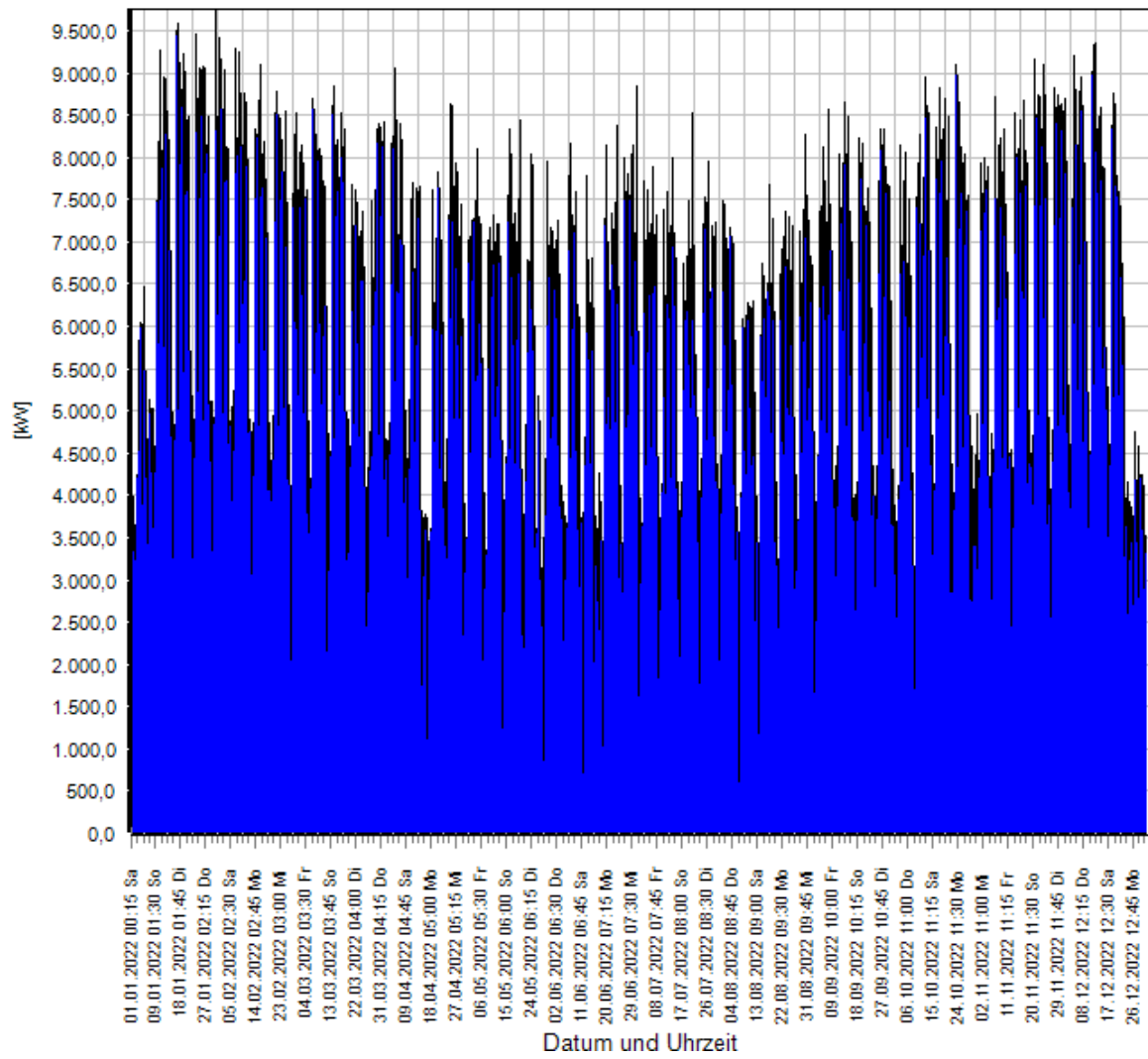
Verluste NE7



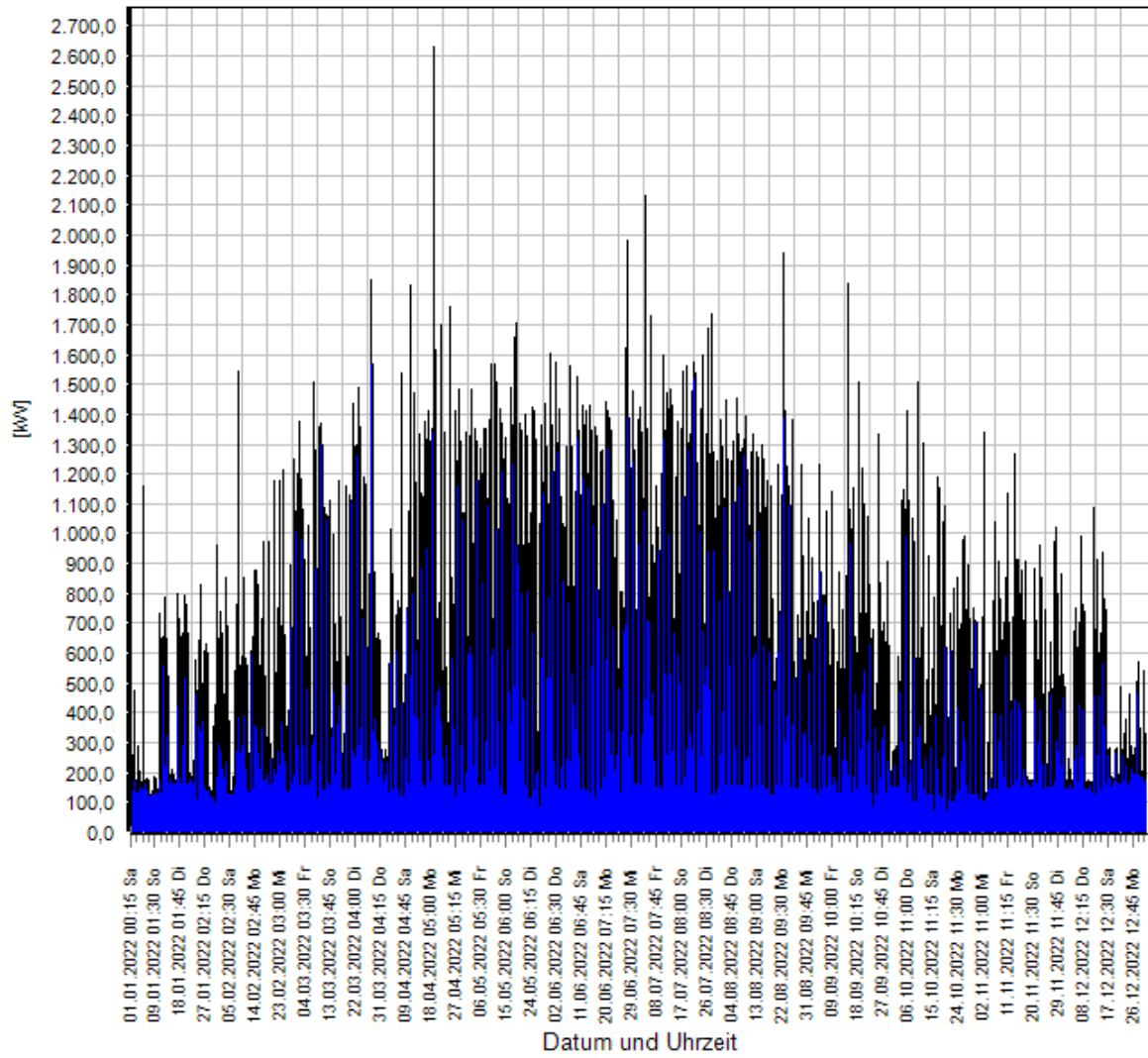
Summe nicht gemessener Letztverbraucher



Verluste nicht gemessener Kunden NE7

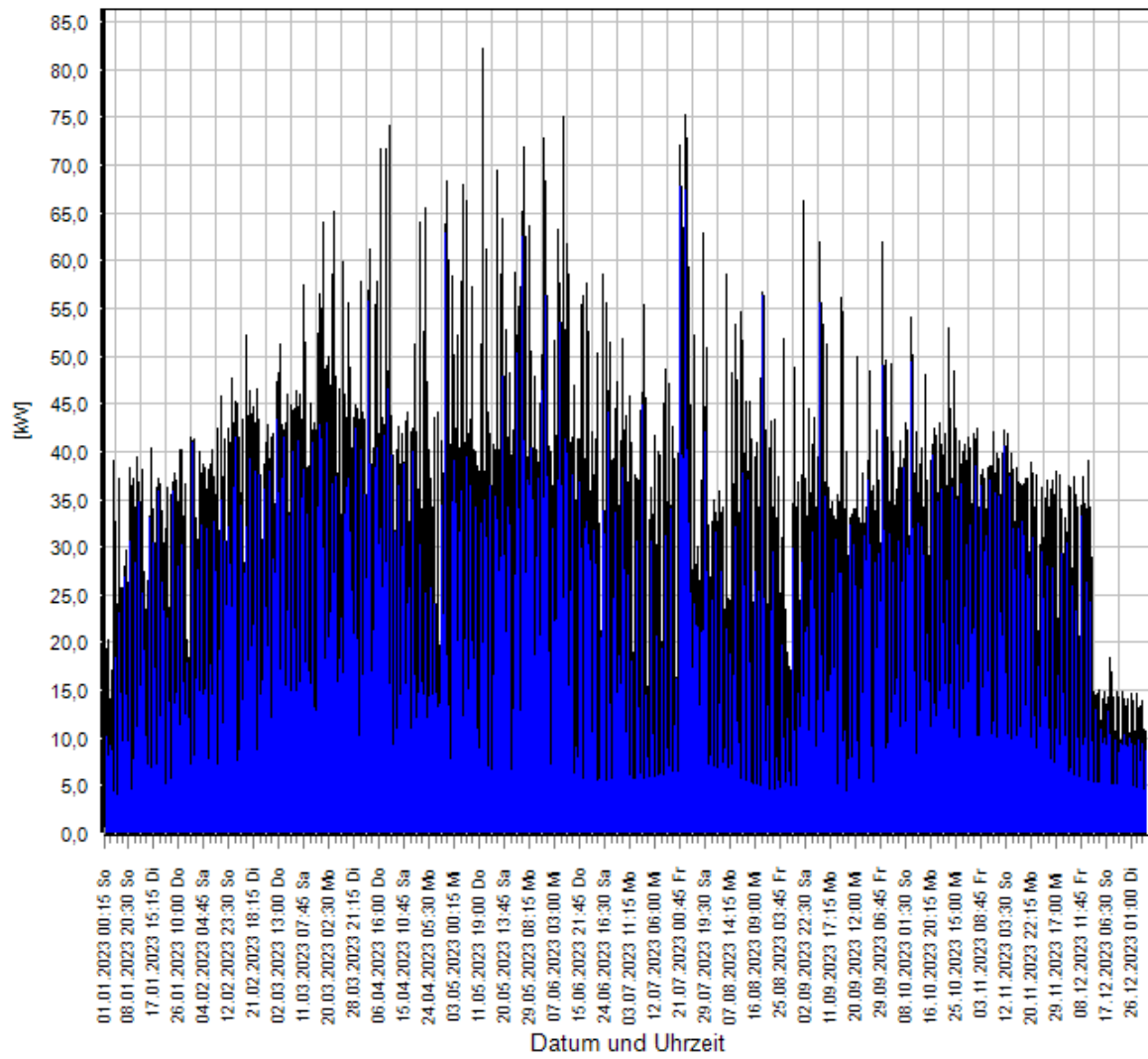


Höchstenenahmelast NE4 NE5 vorgelagertes Netz

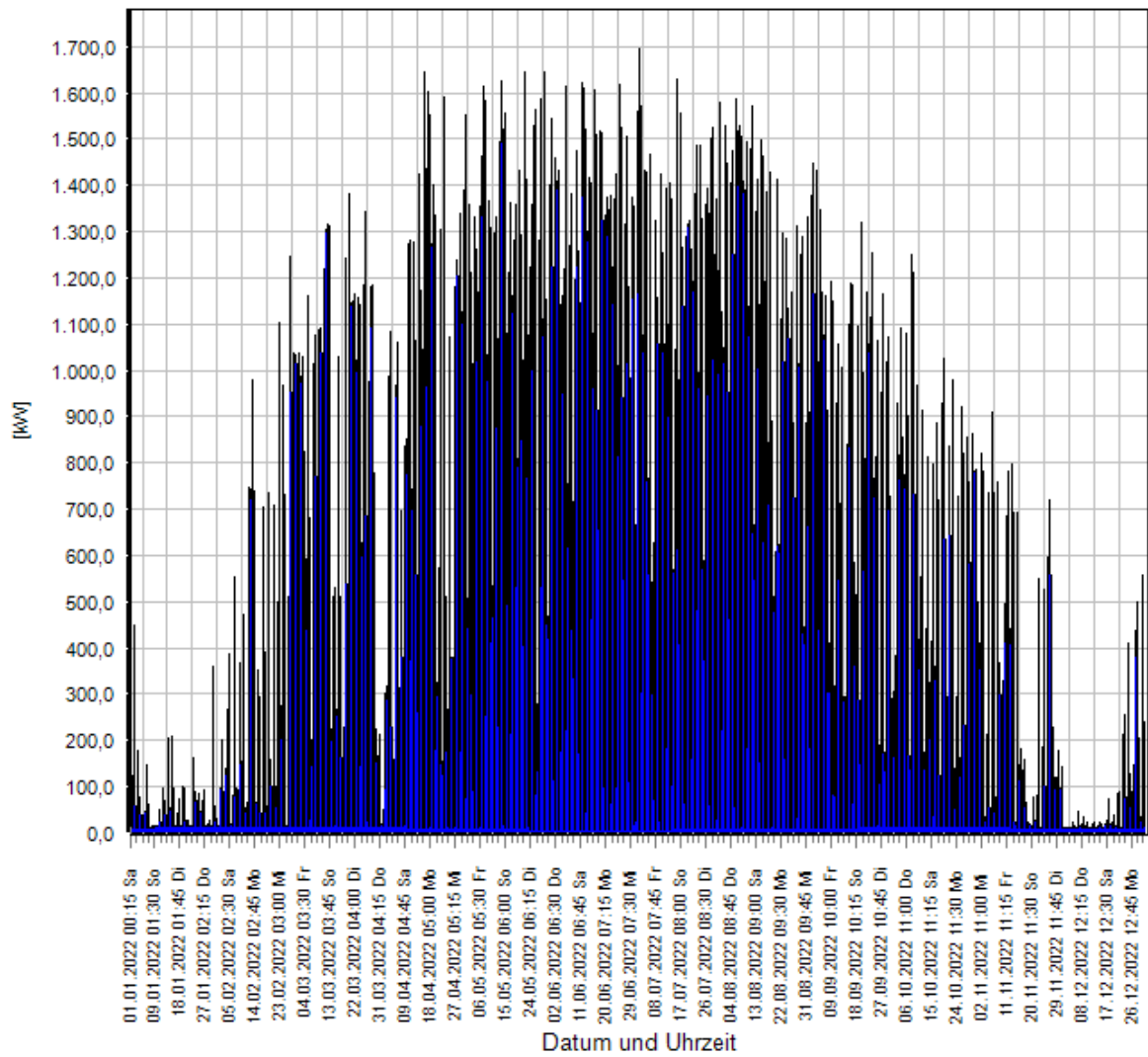


Dezentrale Erzeugung NE5





Dezentrale Erzeugung NE6



Dezentrale Erzeugung NE7

## Mengen der Verlustenergie

NE5	0,93 %
NE6	0,04 %
NE7	1,33 %